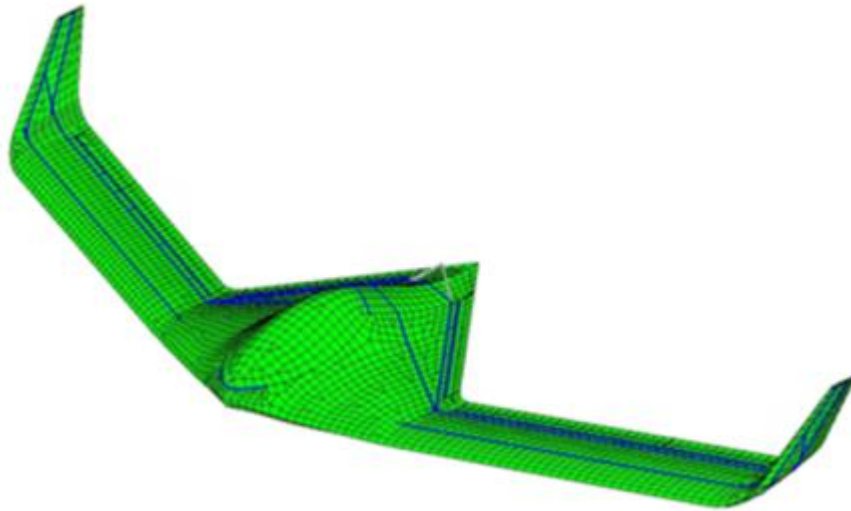




Simulation Data Management



EDMopenSimDM application

System Installation Guide (R11)



EDMOpenSimDM – System installation	Revision no: 11 Date: 2015-11-03
------------------------------------	-------------------------------------

TABLE OF CONTENT

1	Scope	4
2	System Requirements	4
2.1	EDMOpenSimDM server	4
2.1.1	Hardware Requirements.....	4
2.1.2	Software Requirements	4
2.2	EDMOpenSimDM client.....	4
2.2.1	Hardware Requirements.....	4
2.2.2	Software Requirements	5
3	System installation	5
3.1	EDMOpenSimDM Server Installation	5
3.2	EXPRESS Data Manager™ installation.....	10
3.2.1	Install the EDM Server	10
3.2.2	Installing EDM License	12
3.3	Starting the Server	13
3.4	Uninstalling the EDMOpenSimDM Server.....	13
3.5	Uninstalling VCollab and EDM	14
3.6	EDMOpenSimDM client installation	14
3.6.1	EDMOpenSimDM Browser installation.....	16
3.6.2	Configuring the Browser.....	17
3.7	VCollab license.....	18

EDMOpenSimDM – System installation	Revision no: 11
	Date: 2015-11-03

TABLE OF FIGURES

Figure 1. EDMOpenSimDM Server Setup Component selection	6
Figure 2. JAVA runtime check	6
Figure 3. Provide Server path locations	7
Figure 4. The Wizard has found a SimDM Database	8
Figure 5. VCollab Installation Folder	9
Figure 6. Installation process	9
Figure 7. The end of the EDMOpenSimDM Server installation process	10
Figure 8. EDM License Agreement	11
Figure 9. EDM Installation path	11
Figure 10. EDM Installation process	12
Figure 11. EDM License installation	12
Figure 12. Uninstaller Component page.	13
Figure 13. EDMOpenSimDM Server location	14
Figure 14. Select components for installation.....	15
Figure 15. Provide the Vcollab installation folder.....	15
Figure 16. Summary of the installation.....	16
Figure 17. EDMOpenSimDM Browser installation location	16
Figure 18. Login dialog.....	17
Figure 19. Dialog to manage connections.....	17

EDMOpenSimDM – System installation	Revision no: 11
	Date: 2015-11-03

1 Scope

This document describes for both the EDMOpenSimDM Server and the EDMOpenSimDM Browser

- system requirements,
- installation procedures.

2 System Requirements

2.1 *EDMOpenSimDM server*

2.1.1 *Hardware Requirements*

Minimum:

- 4 GB RAM
- 3 GB free disk space on the computer hard drive. This includes the software and needed temporary space for running the server, but this does not include space for back-ups.

The hardware recommendations above are based on a system running one EDMserver™ with three EDMApplicationServers™. If you only have 4 GB RAM, you should use only one EDMApplicationServer™. Normally, the parameter that affects performance the most is the size of the available virtual memory and disk access speed. Another factor that affects performance is the typical size of CAD/CAE files that are converted to the VCollab CAX format. If the typical file size is 5 GB, the recommended RAM size on the server is 5 GB.

2.1.2 *Software Requirements*

64-bits Operating System:

- Windows Vista.
- Windows 7

Runtime environment:

- Java Runtime Environment 1.8 (JRE 8) 64-bit

2.2 *EDMOpenSimDM client*

2.2.1 *Hardware Requirements*

Minimum:

- Win 64 bit
- Minimum of 2 GB Memory and 4 GB virtual memory.
- 500 MB free space on the computer hard drive
- A graphic accelerator card with 128 MB RAM
- Graphic drivers with OpenGL 1.2 and above - for VCollab Presenter software.

EDMOpenSimDM – System installation	Revision no: 11
	Date: 2015-11-03

Recommended:

- Win 64 bit
- 5 GB RAM with 12 GB Virtual Memory
- A graphic accelerator card with minimum of 256 MB RAM
- Graphic drivers that support OpenGL 1.2 and above

2.2.2 Software Requirements

Operating System:

- Windows Vista.
- Windows 7

Runtime system:

- Windows .NET Framework 3.5 SP1

3 System installation

The EDMOpenSimDM system consists of 6 different modules:

1. *EXPRESS Data Manager*TM
2. VCollab data conversion suite
3. Archival application
4. EDMOpenSimDM server
5. EDMOpenSimDM client
6. VCollab Presenter

The first four are installed using *EDMOpenSimDM_Server.exe*; the last two are installed using *EDMOpenSimDM_client_Setup.exe*.

JRE 8 is required for server side installation. Therefore required version of JRE will be downloaded and installed automatically during server installation. Before installing server side you could install JRE 8 for the 64-bits Windows OS manually. JRE can be downloaded from the following links:

<http://www.oracle.com/technetwork/java/javase/downloads/index.html>

Server and client components can be installed on the same machine. In this case start with server installer first. Then client components can be installed.

3.1 EDMOpenSimDM Server Installation

The EDMOpenSimDM server installation shall install the EDM server application, the VCollab Suite and the archival packaging and server database. To start the installation, execute the *EDMOpenSimDM_Server.exe* file.

Third page of the installation wizard, after license agreement, is "Choose Components" page.

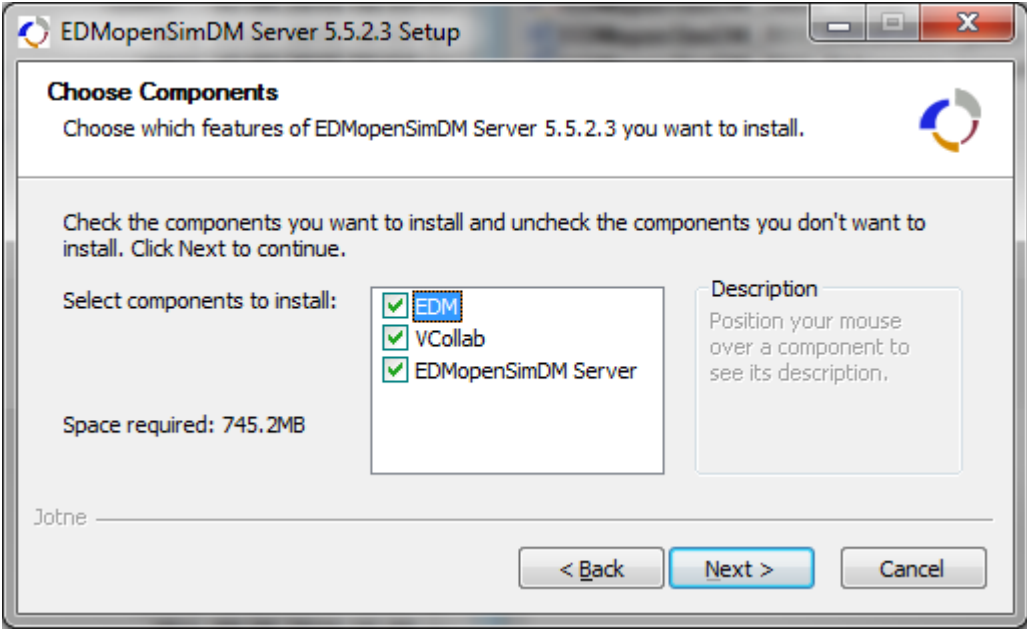


Figure 1. EDMOpenSimDM Server Setup Component selection

Choose the components that you wish to install and press the “Next” button.

In the next page you will be notified about JRE if you do not have appropriate JRE or JDK installed already.

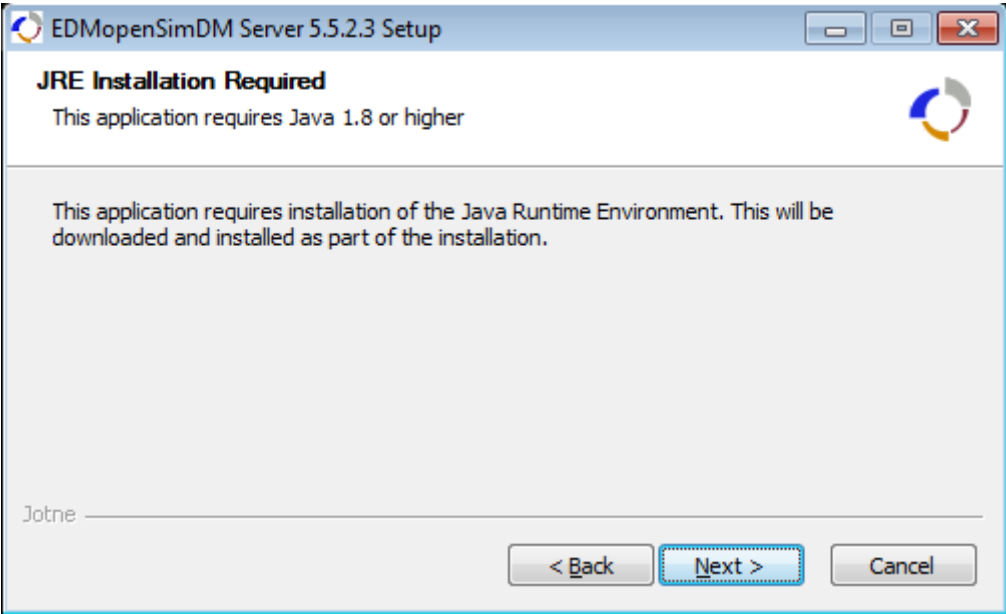


Figure 2. JAVA runtime check

If you have installed JAVA on your machine this page will not be shown.

The next steps shall gather information on where EDM and VCollab will be installed. This information will help the EDMOpenSimDM server installer to correctly create the environments and the server start and stop scripts.

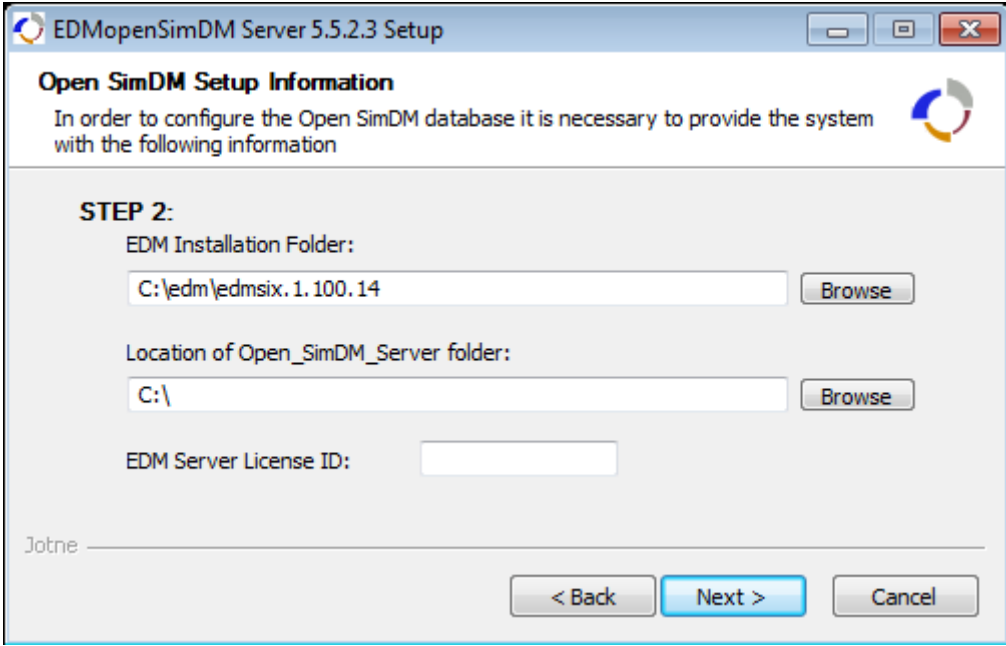


Figure 3. Provide Server path locations

The "EDM Installation folder" is the location for the EDM binary files. If you have an EDM installed, this will present your EDM_HOME folder, see section 3.2. If you do not have an EDM installed, it will show default directory that depends on EDM version included to server installer..

Important:

The EDM installer is a separate application, the "EDM Installation folder" must be the same path that you will give to the EDM installer.

The Open_SimDM_Server folder will be created in the path given. Within this folder a Tomcat web server and the EDMproduct folder will be created. The EDMproduct folder is the standard location for the EDMserver files, which include the database, the backup and the script files. Through these scripts the user can configure, start and stop the EDM server application.

You must also provide your four digit EDM server license ID. If you do not have such a license ID or you cannot find it, contact support@jotne.com. Press the Next button after you have provided the required information.

Important:

Please do not install server components into "Program Files" or similar system folders. And make sure the path does not contain blanks in it.

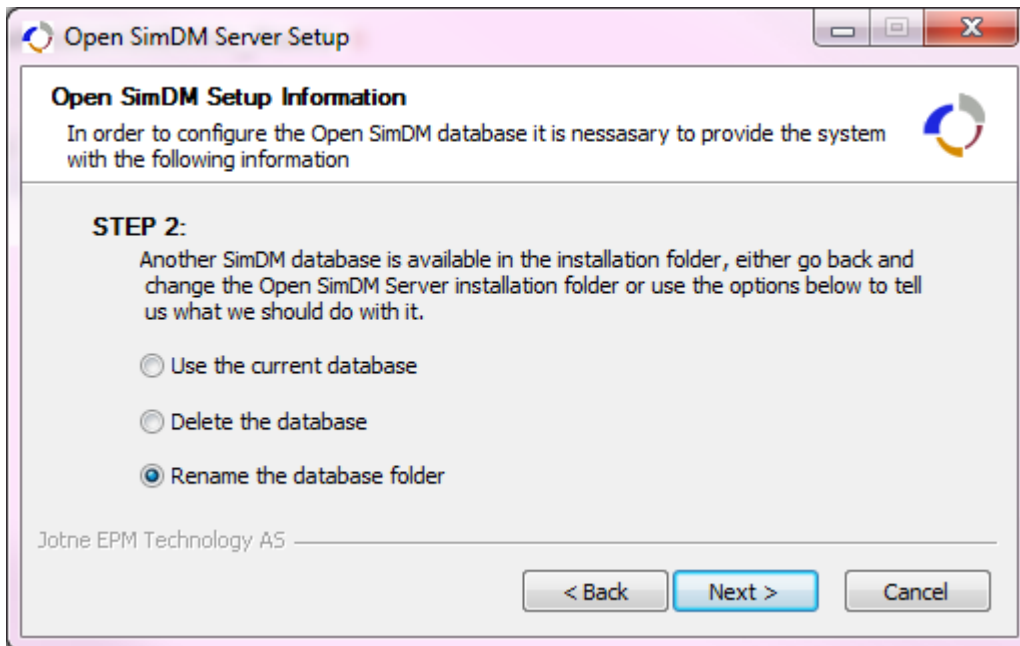


Figure 4. The Wizard has found a SimDM Database

If you have a previous installation of the EDMOpenSimDM server the following windows will be displayed. This page will ask you what to do with the previous EDMOpenSimDM database. You are given the following options:

- Use the current database:
This will use the available database.
- Delete the database
This will remove the database and create a new database.
- Rename the database folder
This will rename the previous database folder to
SimDM_ {current date} and will create a new database.

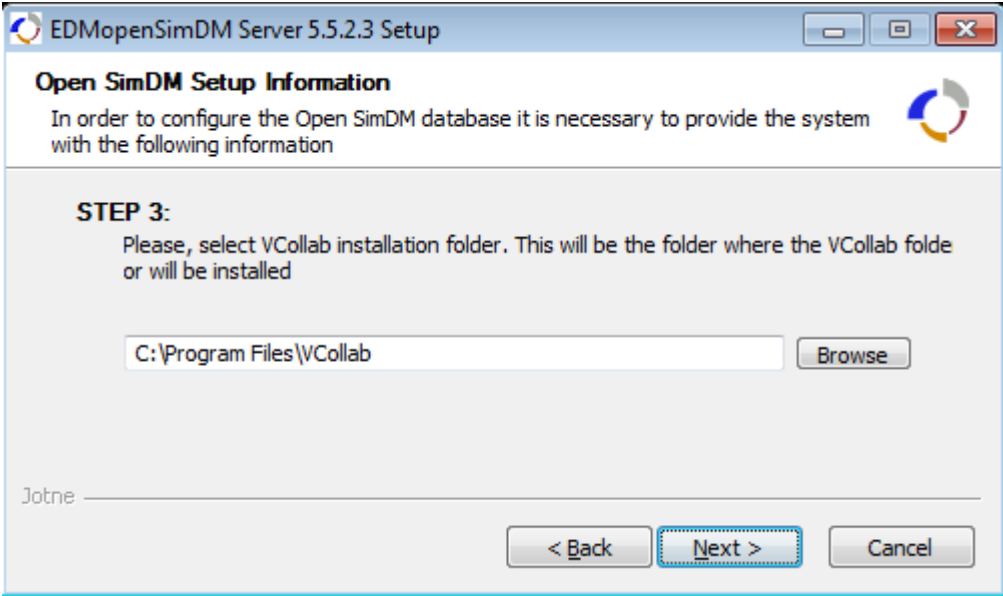


Figure 5. VCollab Installation Folder

In this step VCollab installation folder must be provided. If you have installed the VCollab suite, this will point to the location of your VCollab folder, e.g. C:\Program Files\VCollab.

Press the Next button to go to the next page that represents summary of all selected parameters. And you can continue installation by clicking "Install" button.

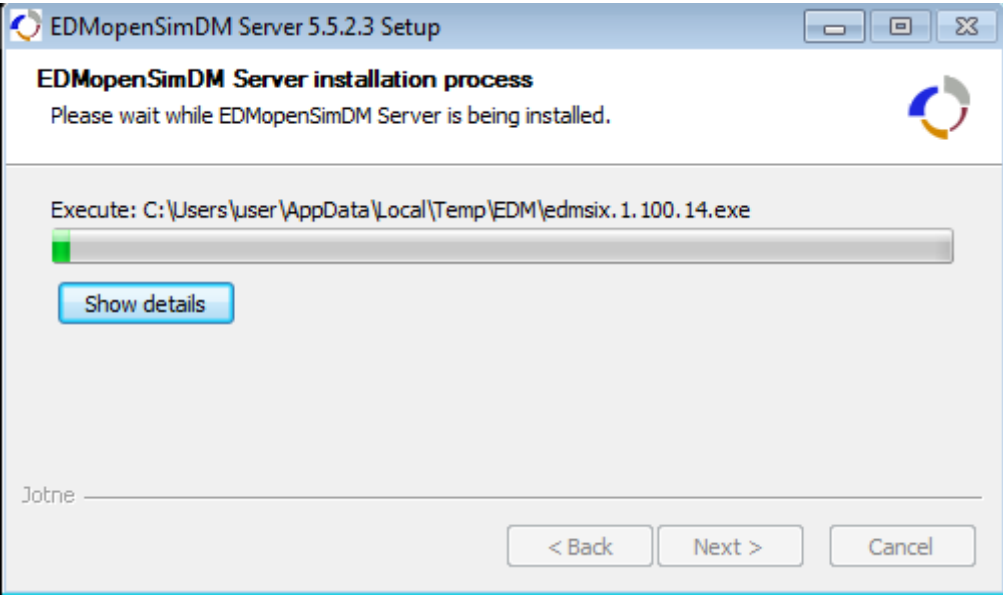


Figure 6. Installation process

The server installer will automatically start the EDM installation wizard. EDM installation is described in chapter 3.2. And then VCollab Suit will be installed in silent mode (without further user interaction).

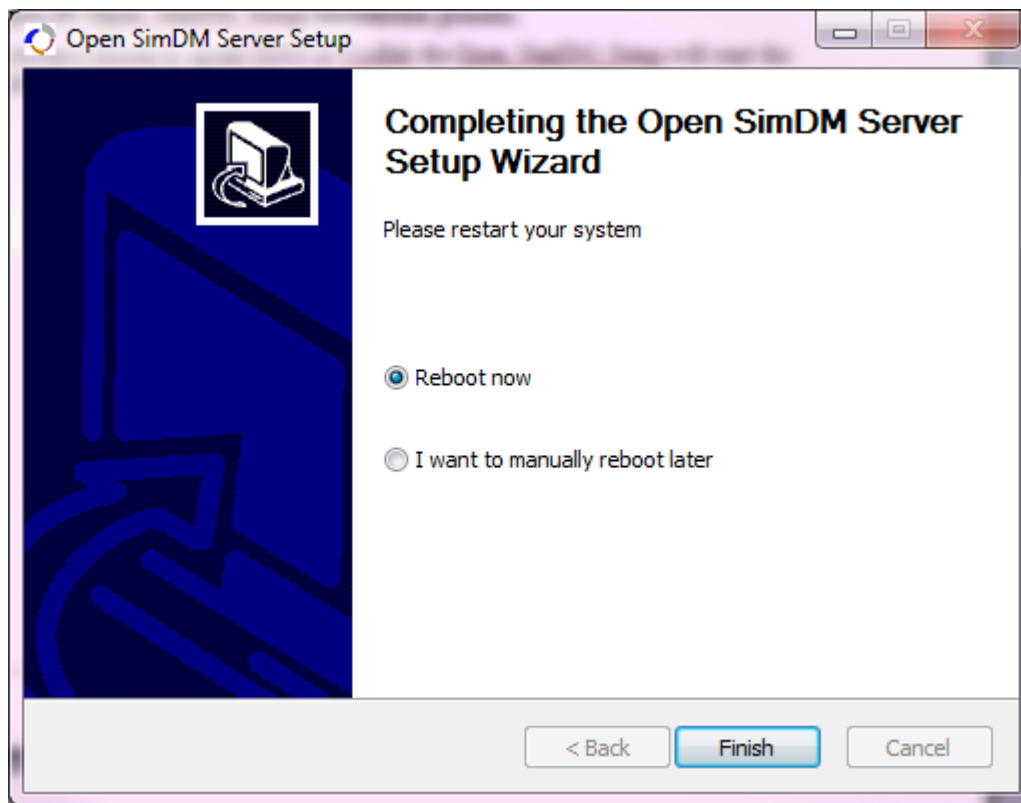


Figure 7. The end of the EDMOpenSimDM Server installation process

It is recommended that you allow to reboot your computer.

3.2 EXPRESS Data Manager™ installation.

The EDM setup process will be called automatically.

3.2.1 Install the EDM Server

Press the Next button at Welcome page to start the EDMserver installation process.

Accept the license agreement and press the Next button.

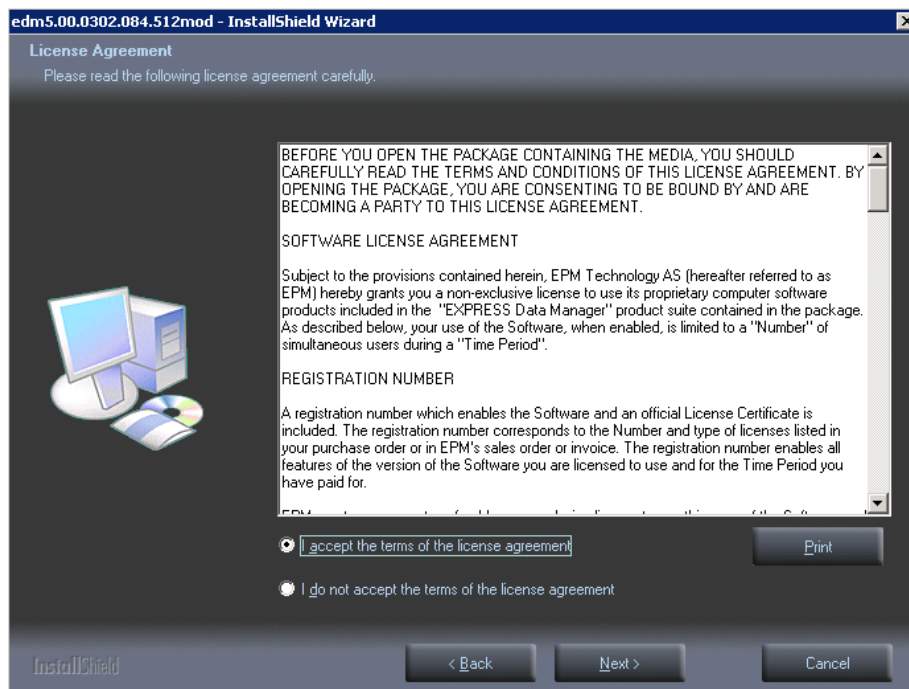


Figure 8. EDM License Agreement

Accept default installation path and press the Next button. This path is referred to as the *EDM_HOME*. This is added to your environment variables automatically.

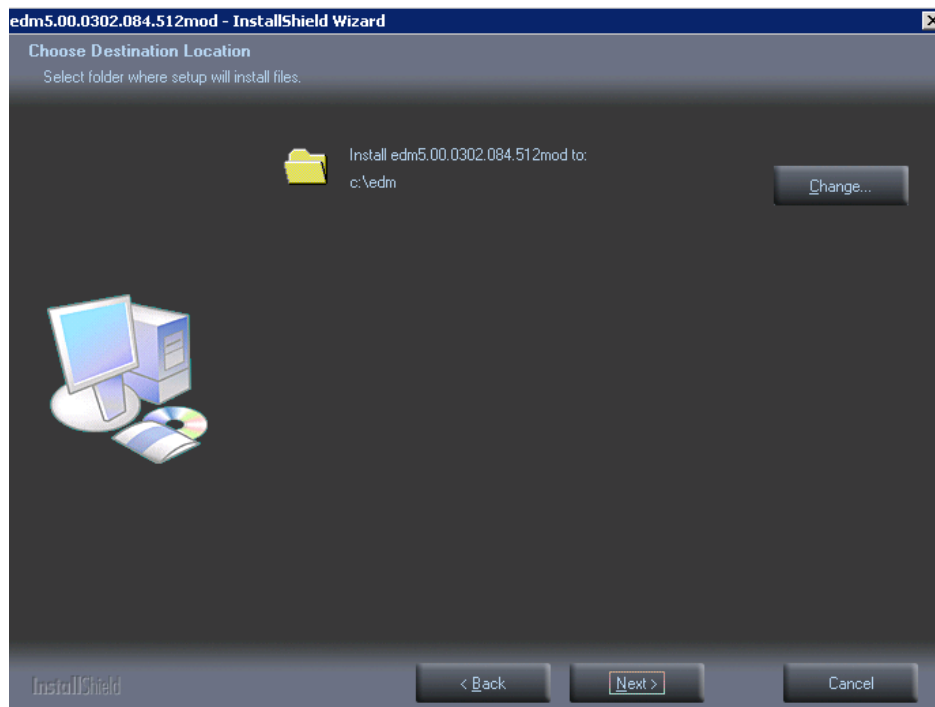


Figure 9. EDM Installation path

Press the Next button to install EDM.

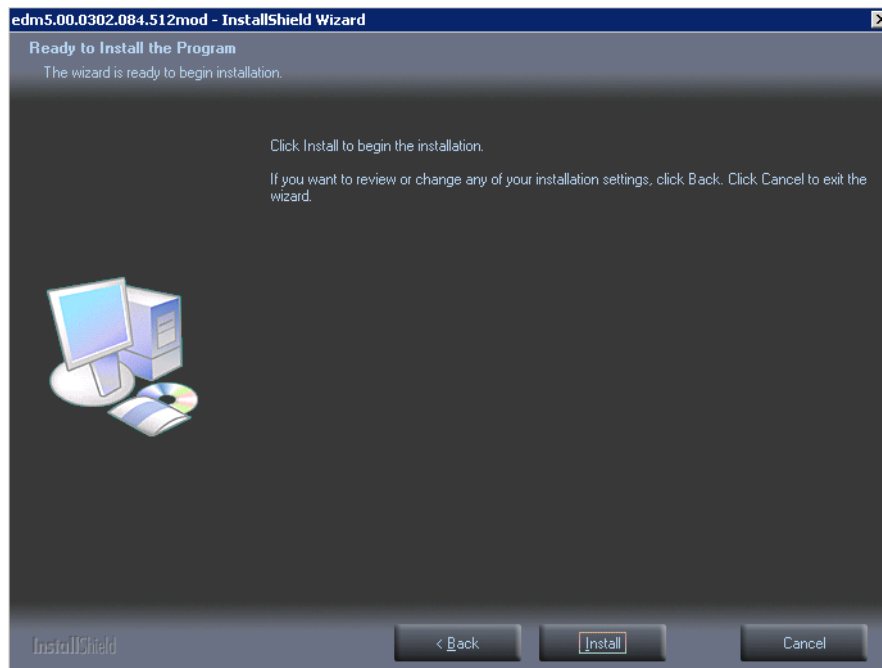


Figure 10. EDM Installation process

Installation can take several minutes.

Press Finish to end the installation process and start the license installation process.

3.2.2 Installing EDM License

The license installation program shall start automatically after the EDM installation is finished. If it does not start, run the following command:

```
%EDM_HOME%\bin\InstallLicenseKey.exe
```

Enter the license ID and password that were provided to you by Jotne and enter the machine name, which you may select yourself. To install the license press the "Start installation" button. Close the program after the license has been installed.

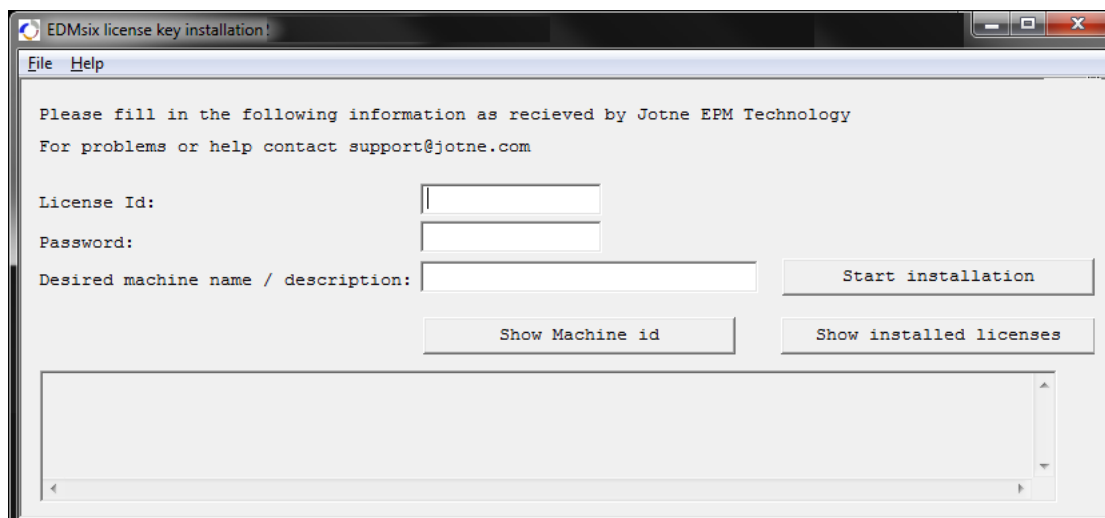


Figure 11. EDM License installation

3.3 Starting the Server

The installation wizard has installed the EDMOpenSimDM server database in the destination folder. This shall then include the following components:

- Open_SimDM_Server\apache-tomcat-8.0.23¹ - Tomcat web server
- Open_SimDM_Server\EDMproducts - database/backup and scripts
- Open_SimDM_Server\uninstall.exe

To start the EDMOpenSimDM server, click the "Start EDMOpenSimDM Server" short cut on the desktop.

To Stop the EDMOpenSimDM server, click the "Stop EDMOpenSimDM Server" shortcut on the desktop.

3.4 Uninstalling the EDMOpenSimDM Server

To uninstall the EDMOpenSimDM Server run the **uninstall.exe** program located "Open_SimDM_Server\" folder.

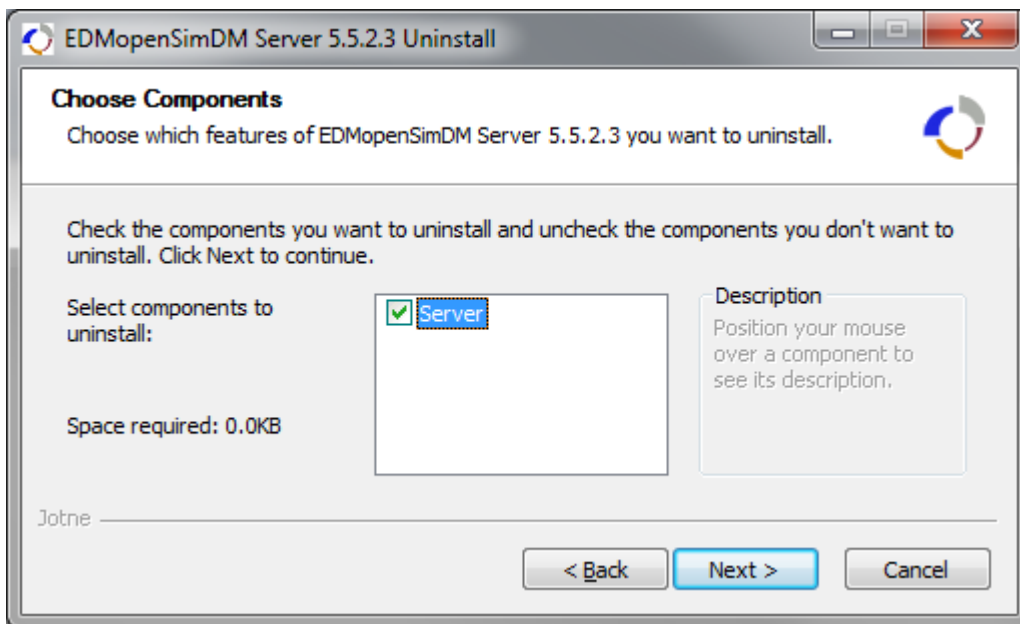


Figure 12. Uninstaller Component page.

Press the Next button to go to the next page.

¹ Tomcat version may be different

EDMOpenSimDM – System installation	Revision no: 11
	Date: 2015-11-03

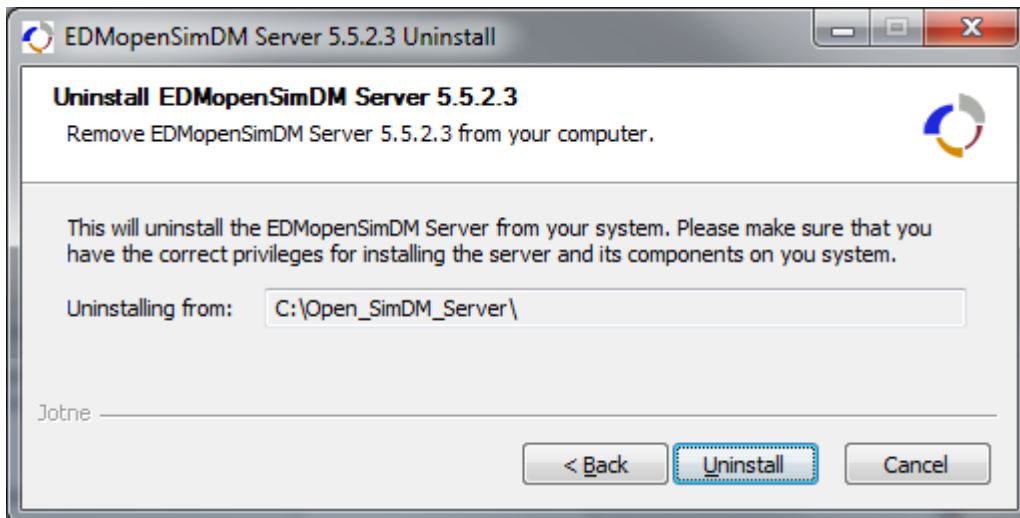


Figure 13. EDMOpenSimDM Server location

After pressing the Uninstall button, the wizard will uninstall or call the components uninstaller application.

3.5 Uninstalling VCollab and EDM

To uninstall VCollab or EDM you must start corresponding windows uninstaller. To start these applications go to Control panel and click the Program and Features. See the following web page of Microsoft support for the details

[Microsoft Support: Uninstall or change a program](#)

From the list select EDM or VCollab and click on the Uninstall button or first right click on the software and choose uninstall.

3.6 EDMOpenSimDM client installation

To install the EDMOpenSimDM client completely both the EDMOpenSimDM Browser and the VCollab Presenter must be installed. This can be installed by executing **EDMOpenSimDM_client_Setup.exe**.

NOTE: The installer will check the presence of Microsoft .NET Framework 3.5. If this is not installed, user will be prompted for automatic download and installation of the .NET Framework.

Executing the **EDMOpenSimDM_client_Setup.exe** will start the process for installing all the necessary components on the client side.

The following pictures will guide you through the installation process.

Firs page of the installation wizard is welcome page.

Second page is license agreement. You must accept this license agreement to go further. To accept press “ I Agree” or “Cancel” to stop the installation process. By accepting the license agreement the wizard will take you to the next step.

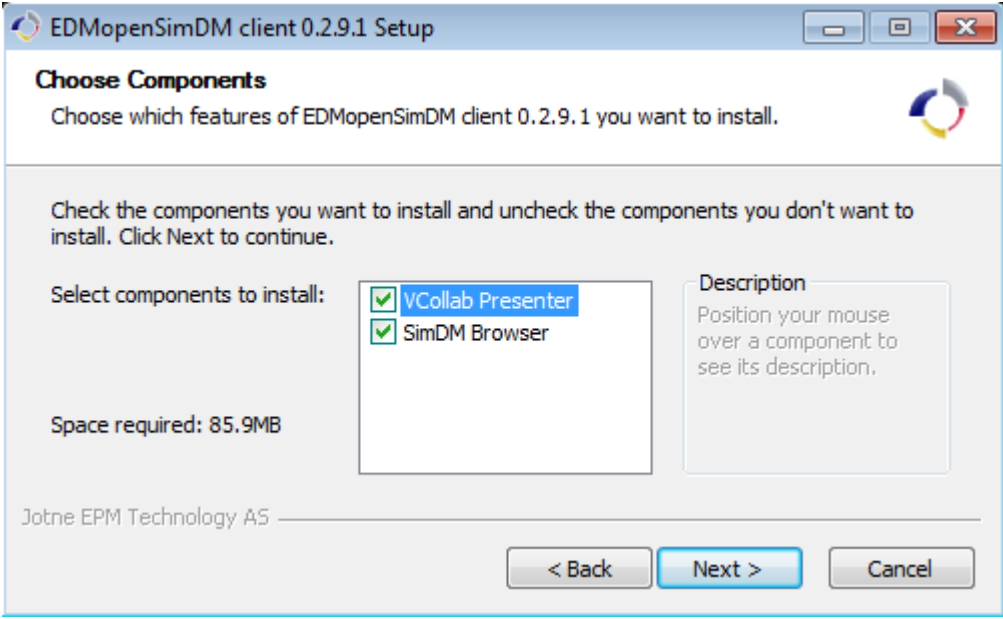


Figure 14. Select components for installation.

On this step you can choose to install the VCollab software, only the browser is mandatory. The EDMopenSimDM browser uses the VCollab Presenter to display a graphical representation of the STEP files.

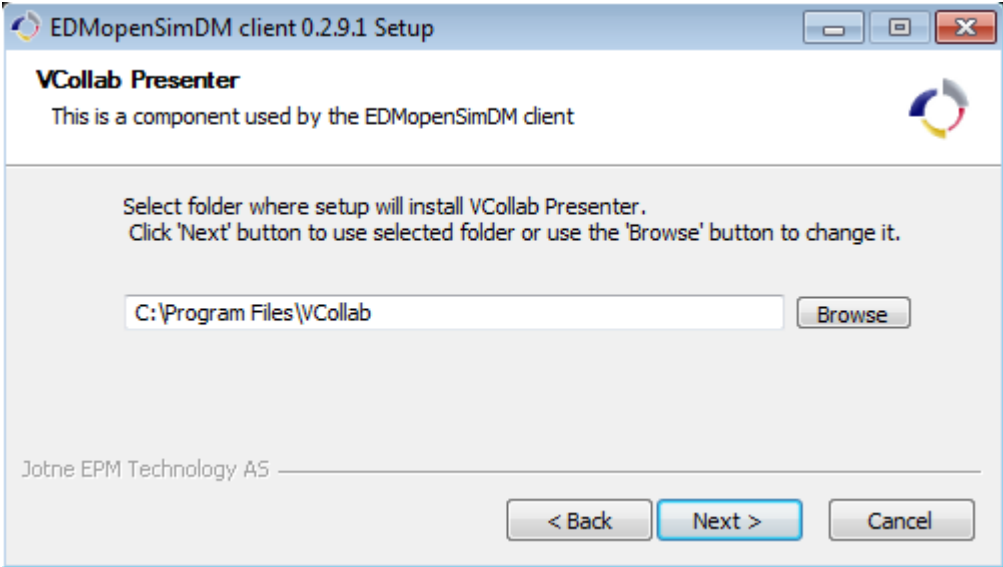


Figure 15. Provide the Vcollab installation folder.

In this step VCollab installation folder should be specified. Default folder is "C:\Program Files\BVollab". It is recommended to not change default folder.

If you have installed the VCollab Suite, this will point to the location of the existing VCollab folder. If you have not installed VCollab yet, this will be the location where you want to install the VCollab application.

Press the Next button to go to the next step.

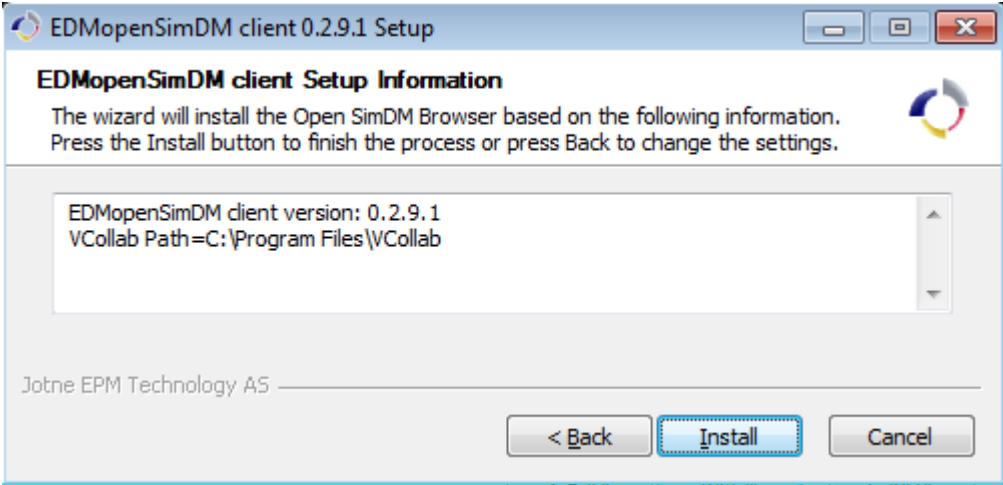


Figure 16. Summary of the installation.

Press the Install button to start the installation process. The installer will first install the VCollab presenter, if selected, in the silent mode. No wizard shall be displayed for the VCollab installation. Afterwards, the EDMOpenSimDM browser shall be installed.

3.6.1 EDMOpenSimDM Browser installation

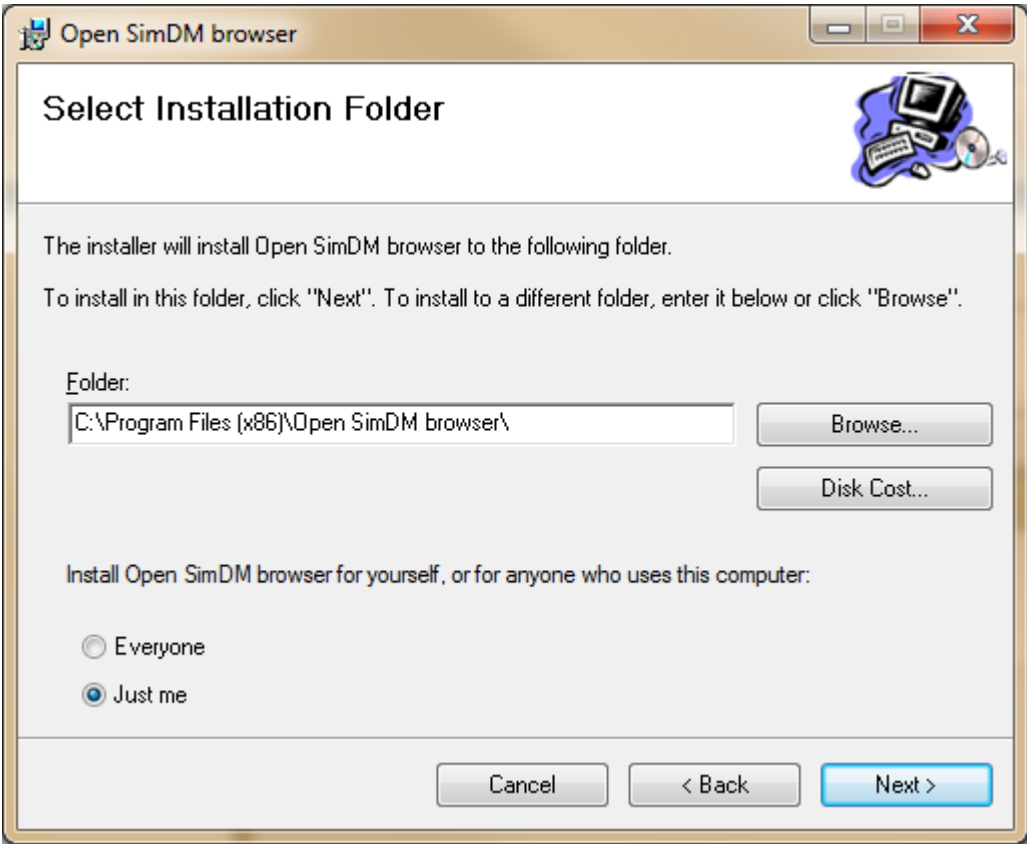


Figure 17. EDMOpenSimDM Browser installation location

Select the location where you want to install the browser and press the Next button. Then installation itself take a while.

At "Installation Complete" page press "Close" button to finish installation.

3.6.2 Configuring the Browser

After start of the SimDM browser its main window is opened, and the “Login to EDMOpenSimDM server” dialog appears.

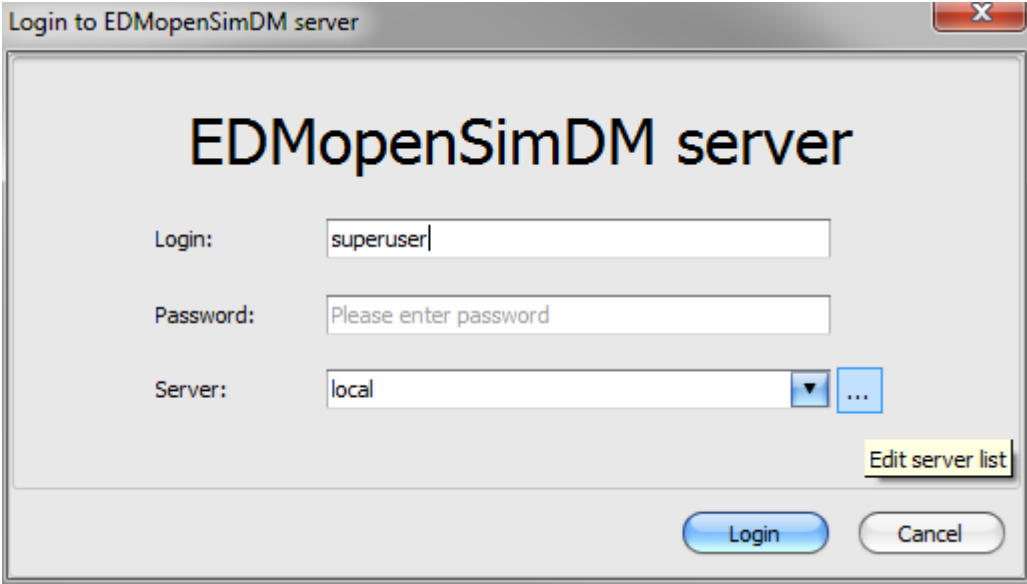


Figure 18. Login dialog

The “Server:” dropdown list contains predefined names of connections. Parameters of connections can be changed in "Servers" dialog after "Edit server list" button is clicked.

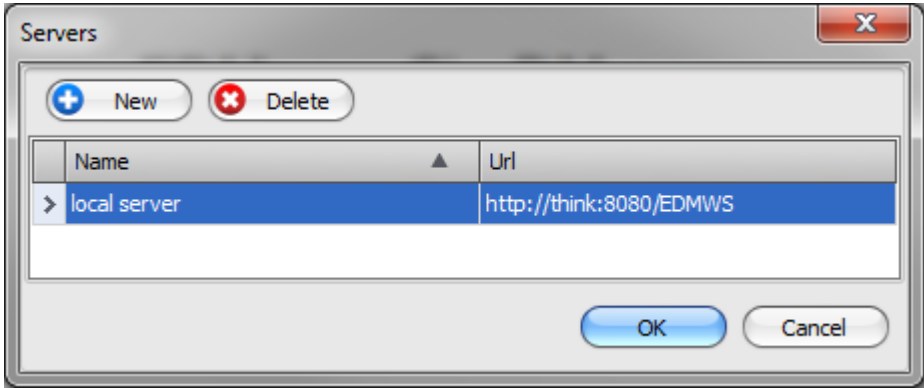


Figure 19. Dialog to manage connections

By default, connection settings point to the following local URL of the SimDM web server:

http://localhost:8080/EDMWS

If the “Cancel” button is clicked, the dialog disappears and no access is given to the system. It is possible to launch the dialog again by the “Server” → “Login” menu item.

Click the “Login” button to get access to the selected server.

3.7 VCollab license

The EDMOpenSimDM installation wizards do not include the license file for VCollab. This is provided separately and needs to be pasted to the right location manually. This location is the following folder:

<your VCollab location>\License