



EDMsixServerConsole



EXPRESS
Data Manager™

User's Guide

for

Version 1.31.0

Proprietary notice

Information in this publication is subject to change without notice. No part of this publication may be distributed to third parties, copied, duplicated, in any form, whole or in part, without the prior written permission.

EDMsixServer, *EDMsixAppServer*, *EDMsixService* and *EDMsixServerConsole* are protected by trademarks, service marks, copyrights, and other proprietary rights and laws.

"Apache Tomcat" and "Tomcat" are trademarks of the apache software foundation. Use of these trademarks is subject to the terms of section 6 of **apache license, version 2.0 (current)**.

TABLE OF CONTENT:

PROPRIETARY NOTICE.....	II
1 INTRODUCTION.....	7
2 THE <i>EDMSIXSERVERCONSOLE</i> SYSTEM.....	8
2.1 Installation.....	8
2.2 Installing and as a standalone extension package.....	8
2.3 Starting the EDMsixServerConsole.....	9
3 EDMSIXSERVERCONSOLE CONFIGURATION.....	11
3.1 Common setting.....	11
3.2 Console setting.....	12
3.3 Service crash settings.....	12
3.3.1 Auto restart setting.....	13
3.3.2 Email notification.....	14
4 SOLUTION CONFIGURATION.....	15
4.1 Server tab.....	15
4.1.1 Adding a new <i>EDMsixServer</i> executables.....	15
4.1.2 Editing an <i>EDMsixServer</i> executables.....	16
4.1.3 Deleting an <i>EDMsixServer</i> executables.....	16
4.2 Configuration tab.....	16
4.2.1 Add new <i>EDMsixServer</i> configuration.....	17
4.2.2 Editing an <i>EDMsixServer</i> configuration.....	18
4.2.3 Deleting an <i>EDMsixServer</i> configuration.....	19
4.3 Database tab.....	19
4.3.1 Create a new database.....	20
4.3.2 Add existing database.....	20
4.3.3 Edit database settings.....	21
4.3.4 Remove EDM database from list.....	21
4.3.5 Delete EDM database from disk.....	22
4.4 Tomcat tab.....	22
4.4.1 Creating a new Tomcat configuration.....	22
4.4.2 Editing an existing Tomcat configuration.....	23
4.4.3 Deleting a Tomcat configurations.....	24

4.5 Solution tab24
5 THE LOG WINDOWS26
6 HIDING OR EXITING THE *EDMSIXSERVERCONSOLE*.....27

TABLE OF FIGURES

Figure 1: Starting the command prompt as an administrator.....	8
Figure 2: Administrator command prompt	9
Figure 3: Installing <i>EDMsixService</i>	9
Figure 4: Starting <i>EDMsixService</i>	9
Figure 5: Error from <i>EDMsixServerConsole</i>	10
Figure 6: <i>EDMsixServerConsole</i> settings	11
Figure 7: Common settings	11
Figure 8: Console setting	12
Figure 9: <i>EDMsixService</i> behaviour	13
Figure 10: Email notification	14
Figure 11: List of all available server configurations	15
Figure 12: Server tab popup menu item.....	15
Figure 13: Add new <i>EDMsixServer</i>	16
Figure 14: Edit <i>EDMsixServer</i> configuration	16
Figure 15: Configuration tab.....	17
Figure 16: Configuration tab menu	17
Figure 17: New <i>EDMsixServer</i> configuration	18
Figure 18: Edit <i>EDMsixServer</i> configuration	19
Figure 19: Database configurations	19
Figure 20: Database menu items.....	20
Figure 21: Create new EDM database	20
Figure 22: Add existing database.....	21
Figure 23: Edit EDM database.....	21
Figure 24: Tomcat tab.....	22
Figure 25: Tomcat menu items	22
Figure 26: Tomcat settings.....	23
Figure 27: Edit Tomcat settings	24
Figure 28: List of solutions	24
Figure 29: Disconnected from the EDMservice state	25
Figure 30: Shortcut in the component dropdown list.....	25

Figure 31: Stopping the solution25

Figure 32: Log windows26

Figure 33: Minimizing the application.....27

Figure 34: Opening the *EDMsixServerConsole* from the system tray.....27

1 Introduction

The purpose of this document is to describe what you can do with *EDMsixServerConsole* and how to do it.

The *EDMsixServerConsole* solution is a product for configuration and management of solutions based on the *EDMsixServer* application.

2 The *EDMsixServerConsole* system

The software comes as a zipped package, to install the software simply unzip the package to your location of choice. The software has two separate components

- 1- *EDMsixService* component : This is a Windows service that will monitor the EDM solutions and make sure that the solution is running.
- 2- *EDMsixServerConsole* component: This is the GUI console that can manage the EDMsix server and setup solutions.

The *EDMsixServerConsole* is either installed as a part of an *EDMsix* installation, or installed as a standalone extension package.

2.1 Installation

In an *EDMsix* installation you will find installation files located under folder $\$(EDM_HOME)\bin$, where $\$(EDM_HOME)$ points to the installation root during *EDMsix* installation. Also, this document will be found under the folder $\$(EDM_HOME)\doc$.

2.2 Installing and as a standalone extension package

A standalone installation is distributed as a zipped package, to install the software simply unzip the package to your location of choice. Before using the system you must install and start the *EDMsixService* as a Windows service. Windows services can only be installed by using the “Windows Administration role“, see Figure 1.

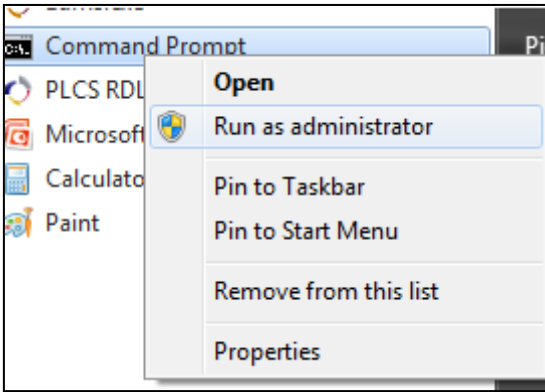


Figure 1: Starting the command prompt as an administrator

This will open the administrator command window, see Figure 2.

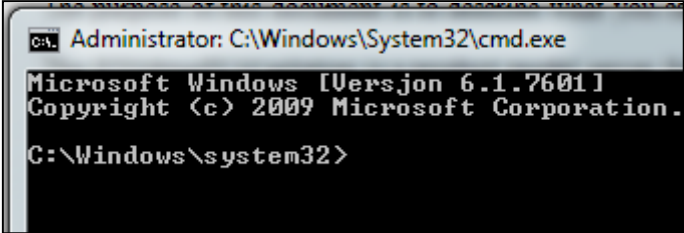


Figure 2: Administrator command prompt

Go to where you have unpacked the *EDMsixServerConsole* package and execute the following command:

- EDM5service -i

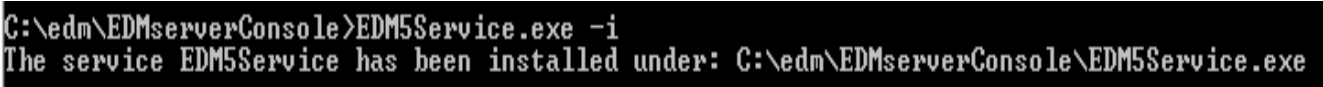


Figure 3: Installing *EDMsixService*

This will install the *EDMsixService* as a Windows service on your system, to start the service run the command without any arguments.

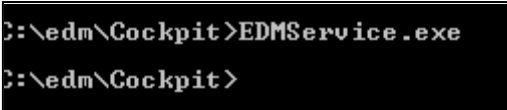


Figure 4: Starting *EDMsixService*

The *EDMsixService* shall automatically start after a Windows reboot.

2.3 Starting the *EDMsixServerConsole*

Start the *EDMsixServerConsole* by running the *EDMsixServerConsole.exe*. If the *EDMsixService* is not yet started, the following error message will be displayed.

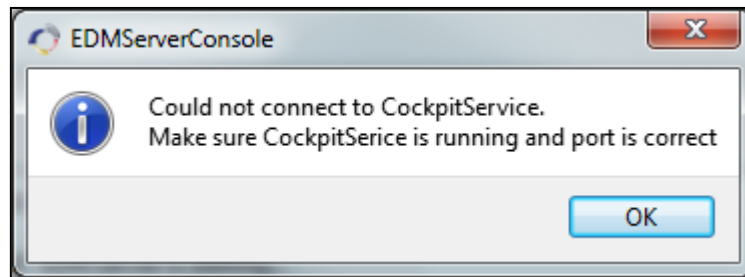


Figure 5: Error from EDMsixServerConsole

The *EDMsixServerConsole* is a the GUI management tool for the *EDMsixServer* and its setup solutions. An *EDMsixServer* solution is a combination of the following settings:

- *EDMsixServer* and *EDMsixAppServer* executables
- *EDMsixServer* runtime configurations
- *EDMsix* database configuration
- Apache Tomcat configuration

Through this application you can create, delete, start and stop solutions based on *EDMsixServer*, *EDMsixAppserver* and Tomcat.

3 EDMsixServerConsole configuration

For configuring the *EDMsixServerConsole* open the “Tools > Application settings” menu item.

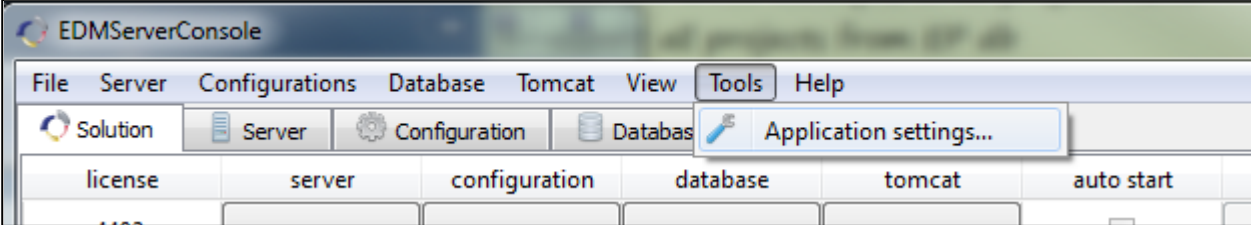


Figure 6: EDMsixServerConsole settings

The following sections will go through the different options within the *EDMsixServerCosole* setting panel.

3.1 Common setting

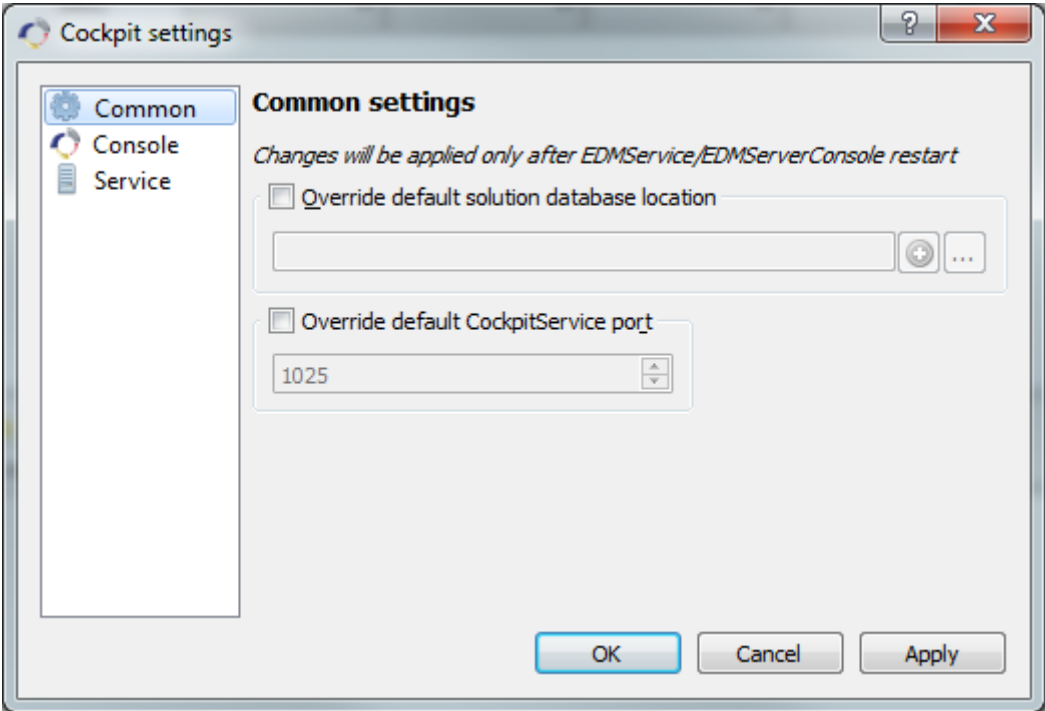


Figure 7: Common settings

The common setting panel allows the user to setup the path for the internal *EDMsixServerConsole* configuration file and the port it uses to communicate with the *EDMsixService*.

3.2 Console setting

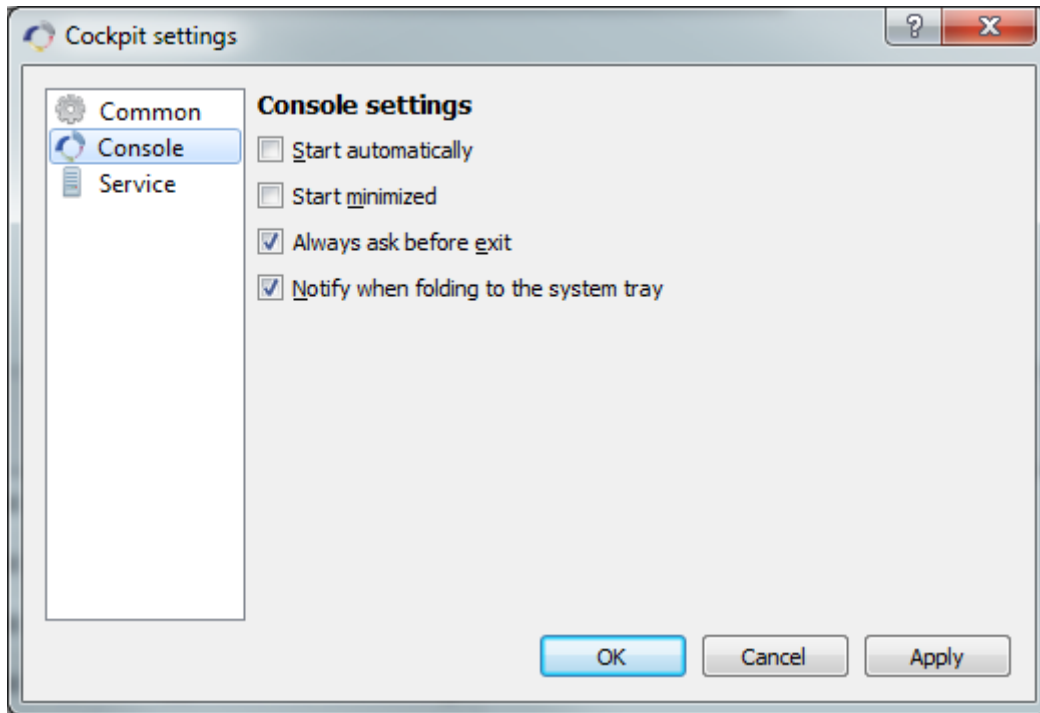


Figure 8: Console setting

The console setting allows the user to adjust how the *EDMsixServerConsole* behaves.

3.3 Service crash settings

The service settings is divided into Auto restart settings and notification settings.

3.3.1 Auto restart setting

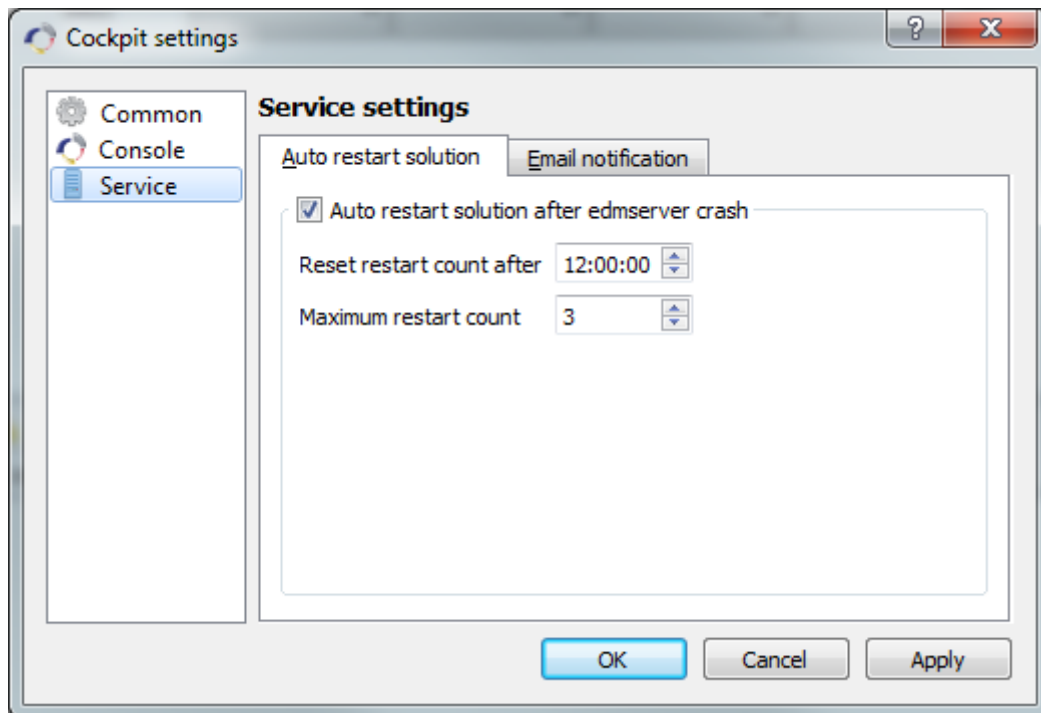


Figure 9: EDMsixService behaviour

The auto restart setting allows the user to configure how the *EDMsixService* should react if the *EDMsixServer* has crashed. By default the *EDMsixService* restarts the *EDMsixServer* after each crash, if the *EDMsixServer* has crashed for the maximum number of counts within the time period, “Reset restart count after”, the *EDMsixService* will not restart the *EDMsixServer* if it crashes again. After the time period the counter will reset to zero, this will also happen if the Windows system is rebooted or the *EDMsixService* is restarted.

3.3.2 Email notification

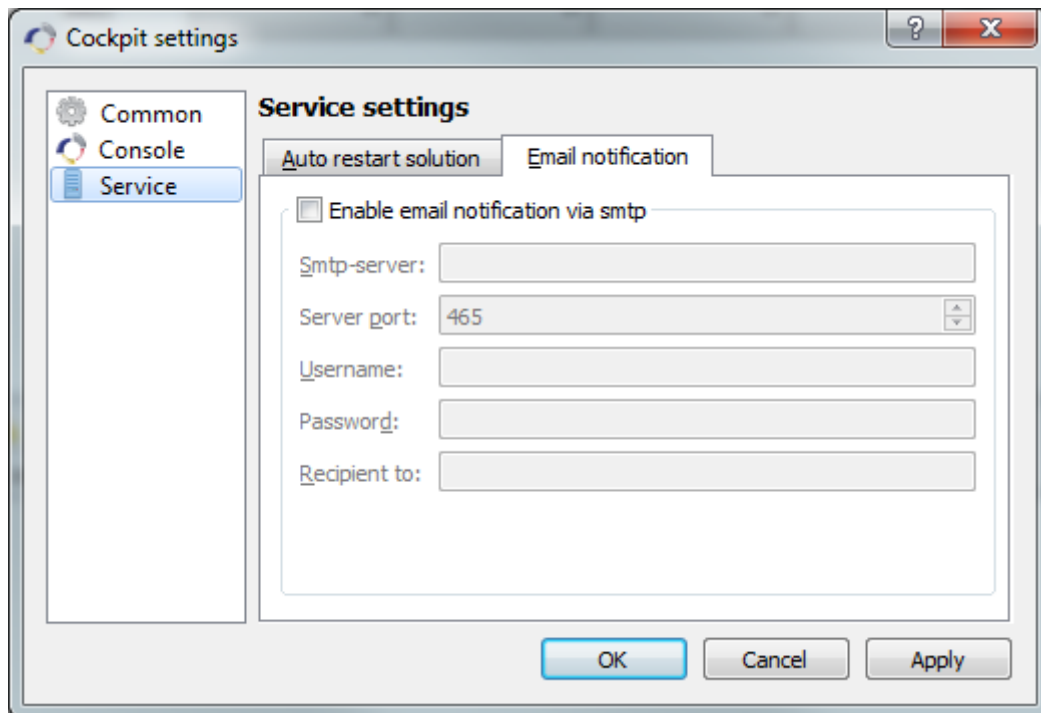


Figure 10: Email notification

The system can send email notifications when the *EDMsixServer* has crashed. To enable this the user has to provide a SMTP server settings.

4 Solution configuration

Before starting a solution its components must be configured. To manage a component configuration either use the menu item for that component or use the component tab. In addition, the component tab shows the list of different configurations for the component.

NOTES:

- 1- It is not possible to edit or remove components of a solution when the solution is running. The corresponding menu item is greyed if the user cannot do this action.
- 2- Each configuration of a component is identified by a user defined name.

4.1 Server tab

The server tab lists all available server configurations, see Figure 11.

server	executable	app server executable
1	C:/edm/edm5.02.0100.15-win32-vs6-128mod/...	C:/edm/edm5.02.0100.15-win32-vs6-128mod/bin/edmappserver.exe
2	C:/edm/edm5.02.0100.15-win32-vs6-128mod/...	C:/edm/edm5.02.0100.15-win32-vs6-128mod/bin/edmappserver.exe

Figure 11: List of all available server configurations

In addition, through the server tab one can create, delete or edit a server configuration. To create a server configuration either right click in the tab area or use the Server menu item.

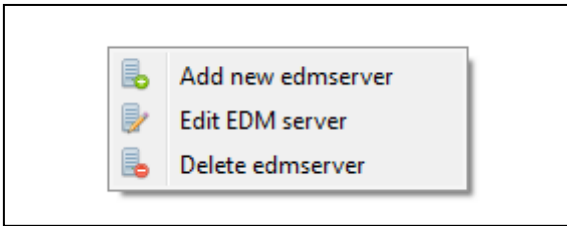


Figure 12: Server tab popup menu item

4.1.1 Adding a new *EDMsixServer* executables

To create a new configuration click on the “Add new edmserver”, see Figure 13.

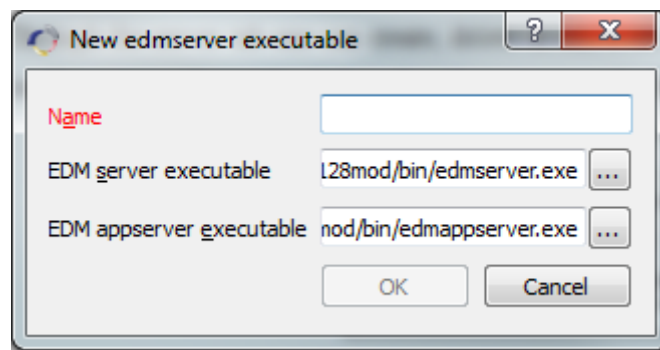


Figure 13: Add new *EDMsixServer*

Give a name to the configuration and make sure that the system is correctly pointing to the EDM version you want to use and press the “OK” button. The default binary files point to the last EDM installation.

4.1.2 Editing an *EDMsixServer* executables

To edit an existing *EDMsixServer* configuration, select the configuration from the list and click on the “Edit EDM server” menu item, this will open the “Edit *EDMsixServer* executable”, see Figure 14.

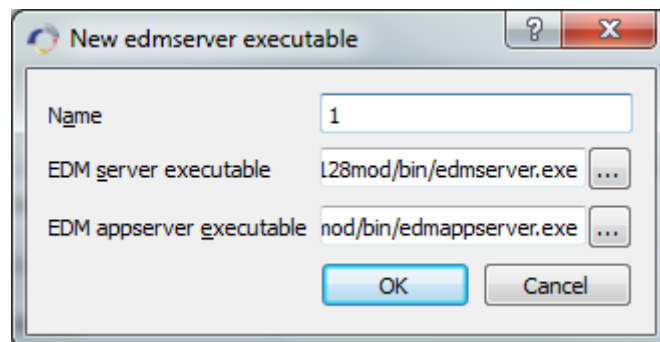


Figure 14: Edit *EDMsixServer* configuration

4.1.3 Deleting an *EDMsixServer* executables

To delete a configuration, select the configuration item and click on the “Delete *EDMsixServer* executables” menu item.

4.2 Configuration tab

The configuration tab lists all the available runtime settings for the *EDMsixServer* and *EDMsixAppServers*, see Figure 15.

configuration	port	app server count	app server tmp dir	logon method	server creation method	allowed characters	backup
1	9090	1	C:/Users/es.JOT...	NO_SSO	DEFAULT_USER...	!#\$%&'*+ -/= ?^...	00:00
2	9090	1	C:/Users/es.JOT...			!#\$%&'*+ -/= ?^...	00:00

Figure 15: Configuration tab

To manage the *EDMsixServer* configuration use the “Configuration” menu item or right click in the “Configuration” tab to either add, edit or delete a server configuration, see Figure 16.

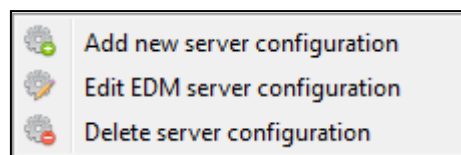


Figure 16: Configuration tab menu

4.2.1 Add new *EDMsixServer* configuration

To add a new runtime server configuration click on the “Add new server configuration”, this will open the “New runtime configuration” dialog, see Figure 17.

For a full description of each item within the “New runtime configuration” dialog refer to the EDM help manual. Below you can find a brief description of each item.

- Name: Name of the configuration
- Port: *EDMsixServer* port number
- Application server count: The number of running *EDMsixAppServers*.

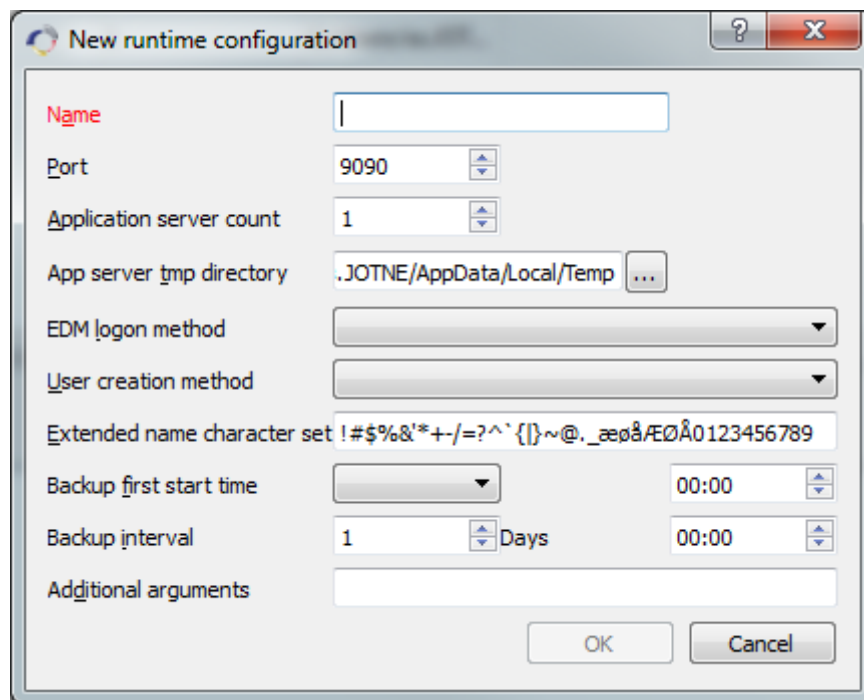


Figure 17: New *EDMsixServer* configuration

- App server tmp directory: Temporary folder for all *EDMsixAppServers*.
- EDM logon method: Different methods for login into the EDM system.
- User creation method: How *EDMsixServer* will create EDM users.
- Extended name character set: Additional legal characters that can be used inside *EDMsixServer* database.
- Backup: This section is for *EDMsixServer* runtime backup configuration.
- Additional argument: Providing additional EDM configuration statements. The given string will be added to the *EDMsixServer* command line arguments without any modifications. As an example:
`-ae" EDM_SERVER_CLIENTS_FILES_PATH_UTF8_ENCODED=path"`.

4.2.2 Editing an *EDMsixServer* configuration

To edit an existing *EDMsixServer* configuration, select the configuration from the list and click on the "Edit *EDMsixServer* configuration" menu item, this will open the "Edit *EDMsixServer* configuration", see Figure 18

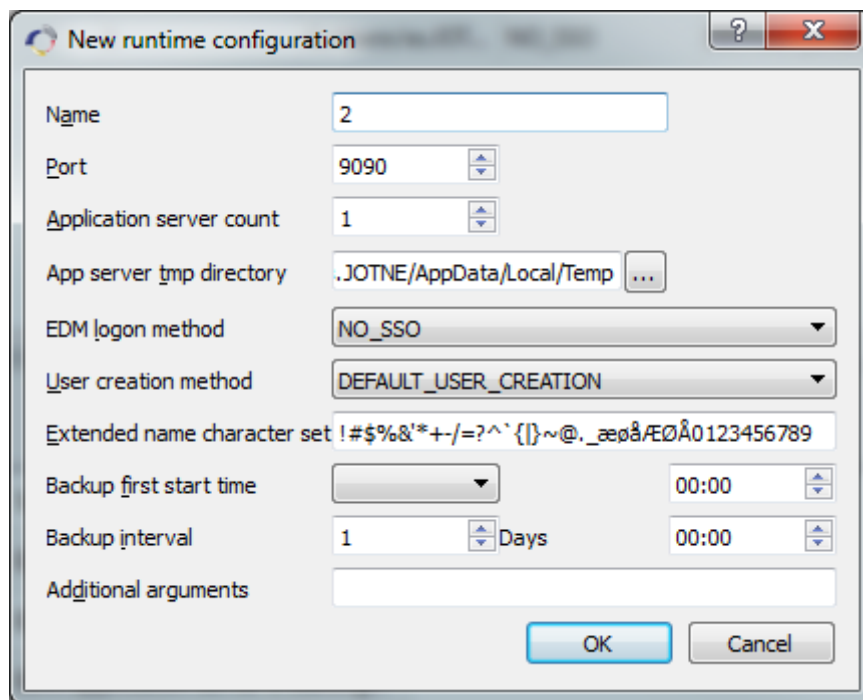


Figure 18: Edit *EDMsixServer* configuration

4.2.3 Deleting an *EDMsixServer* configuration

To delete a configuration, select the configuration item and click on the “Delete *EDMsixServer* configuration” menu item.

4.3 Database tab

The database tab lists all available EDM databases, see Figure 19.

name	path	enable backup	backup location	backup versions count
1	C:/edm/testDB...	<input type="checkbox"/>		10
tp	O:/Projects/ED...	<input type="checkbox"/>		10

Figure 19: Database configurations

The “Database” menu item or the Database tab context menu allows the user to manage the database configures.

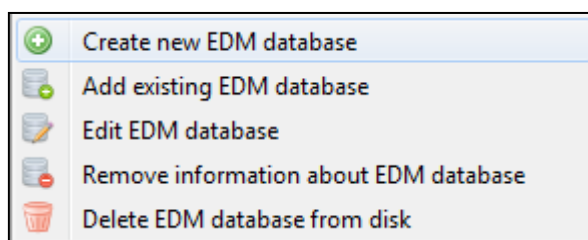


Figure 20: Database menu items

4.3.1 Create a new database

Click on the “Create a new EDM database” menu item, this will open the “Create new EDM database”, see Figure 21.

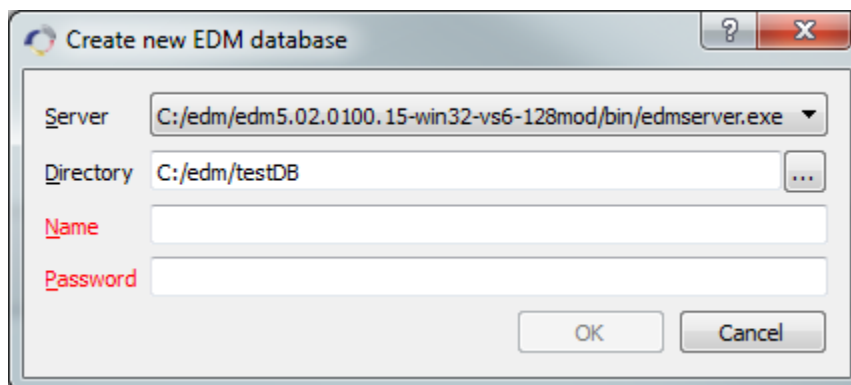


Figure 21: Create new EDM database

To create a database the user has to first select an *EDMsixServer* executable from the list of available *EDMsixServers*, and provide the database path, the database name and the database password.

NOTE:

- 1- The database name must be unique within the given database path. The system will not allow non unique database name to be given.
- 2- The new database will not be added to the list of available EDM databases automatically.

4.3.2 Add existing database

To add an existing database to the list, use the “Add existing EDM database” menu item, which will bring up Figure 22. To add the database to the list the user has to provide a name and the location of the database. To enable the *EDMsixServer* backup check the “Enable backup” check box and enter the backup destination location and the number of backup versions.

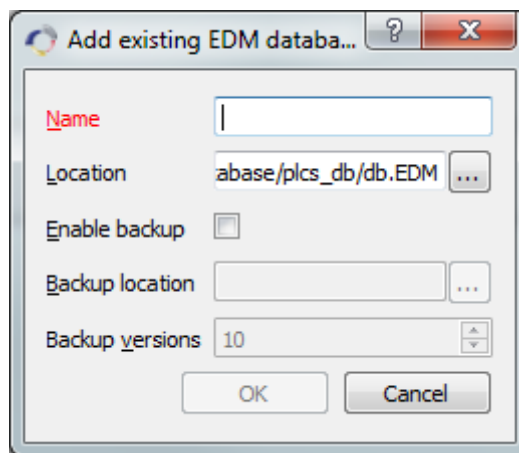


Figure 22: Add existing database

4.3.3 Edit database settings

Select the item from the list and click on the “Edit EDM database” menu item.

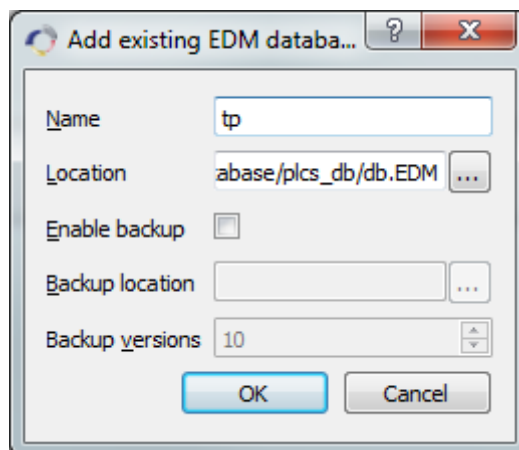


Figure 23: Edit EDM database

4.3.4 Remove EDM database from list

To remove the EDM database from the database list, select the database and click on the “Remove information about EDM database”.

NOTE:

This will only remove the item from the list and will not delete the actual database files from the hard drive.

4.3.5 Delete EDM database from disk

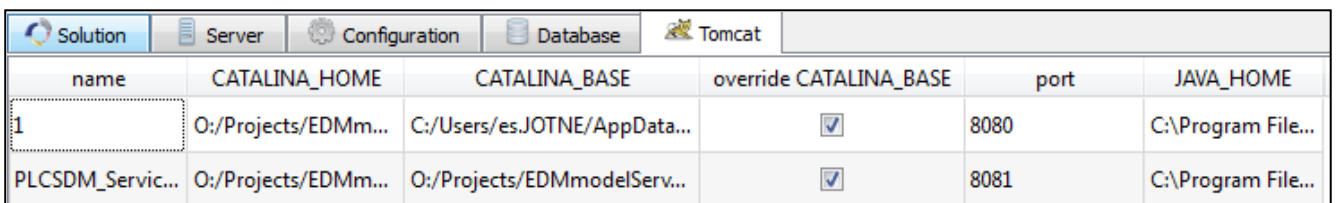
To delete the EDM database files from the hard drive, select the database and click on the “Delete EDM database from disk”. This will remove the selected database from the disk.

NOTE:

No warnings will be given when the user clicks on the “Delete EDM database from disk”.

4.4 Tomcat tab

The Tomcat tab lists all the available configurations for the Tomcat application server, see Figure 24.



name	CATALINA_HOME	CATALINA_BASE	override CATALINA_BASE	port	JAVA_HOME
1	O:/Projects/EDMm...	C:/Users/es.JOTNE/AppData...	<input checked="" type="checkbox"/>	8080	C:\Program File...
PLCS DM_Servic...	O:/Projects/EDMm...	O:/Projects/EDMmodelServ...	<input checked="" type="checkbox"/>	8081	C:\Program File...

Figure 24: Tomcat tab

To manage the Tomcat configurations use the “Tomcat” menu or the “Tomcat” tab context menu, see Figure 25.

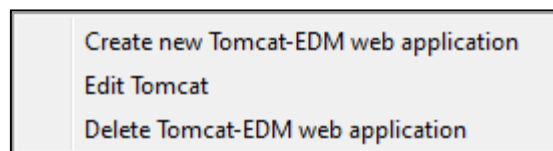


Figure 25: Tomcat menu items

4.4.1 Creating a new Tomcat configuration

Click on the “Create new Tomcat –EDM web application”. This will open the Create new Tomcat settings dialog box, see Figure 26.

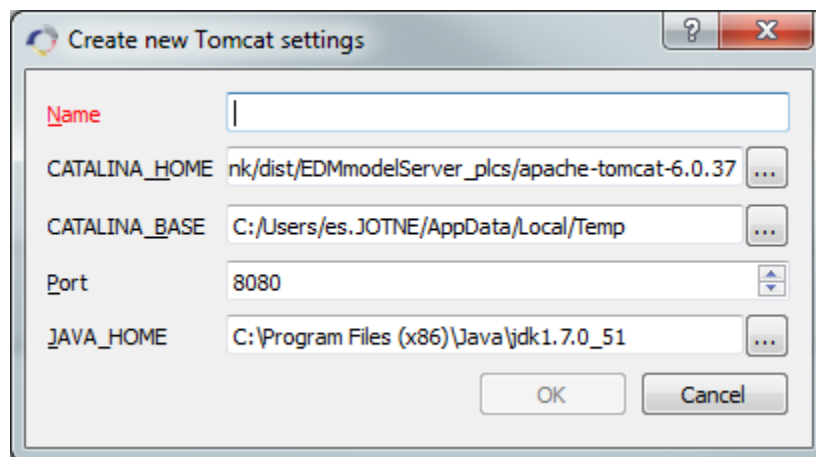


Figure 26: Tomcat settings

The user should provide the following information:

- Name: The name for the Tomcat settings
- CATALINA_HOME: Points to the Tomcat installation folder.
- CATALINA_BASE: Points to location of the Tomcat web application
- Port: Tomcat port
- JAVA_HOME: Location of the JAVA installation.

NOTE:

The default values for the JAVA_HOME and CATALINA_HOME will be read from the system environment parameters if they are available.

4.4.2 Editing an existing Tomcat configuration

Click on the “Edit Tomcat” menu item, see Figure 27.

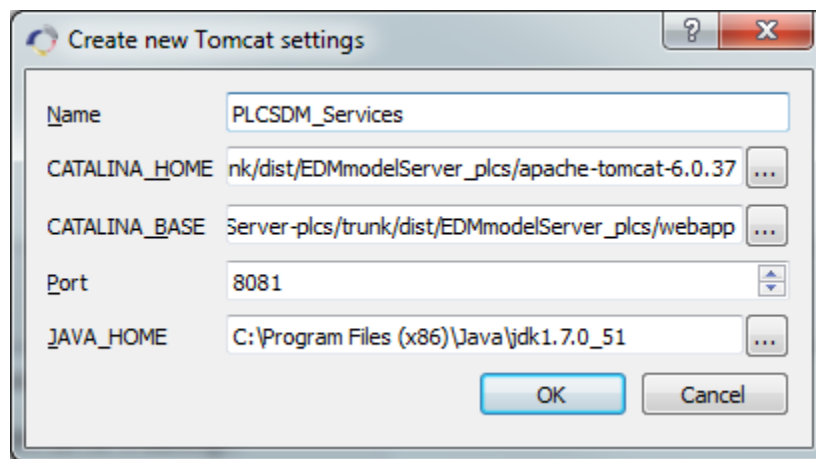


Figure 27: Edit Tomcat settings

4.4.3 Deleting a Tomcat configurations

Select the item from the list and click on the “Delete Tomcat- EDM web application” menu item.

4.5 Solution tab

The solution tab lists available *EDMsixServer* licenses for which the user can create an EDM solution based on the items from the other tabs.

license	server	configuration	database	tomcat	auto start	
4402	1	1	tp	PLCSDM_Serv	<input type="checkbox"/>	Start
5588	1	2	1	1	<input type="checkbox"/>	Start

Figure 28: List of solutions

Select the configurations that you want from the dropdown lists and press the “Start” button, under the last column (“state” column), to start the solution. The “auto start” check box identifies if you wish the solution to automatically start when the *EDMsixService* is started.

If the *EDMsixServerConsole* cannot connect to the *EDMsixService* the “state” column will show a different button that will allow the user to try to reconnect to the *EDMsixService*, see Figure 29.

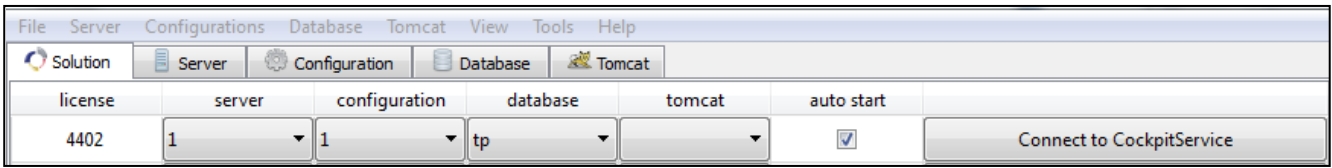


Figure 29: Disconnected from the EDMservice state

You can also create a new configuration of each item directly from their respective dropdown lists, see Figure 29.

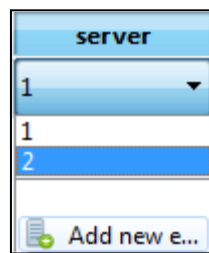


Figure 30: Shortcut in the component dropdown list

To stop a solution click on the “Stop” button, see Figure 30

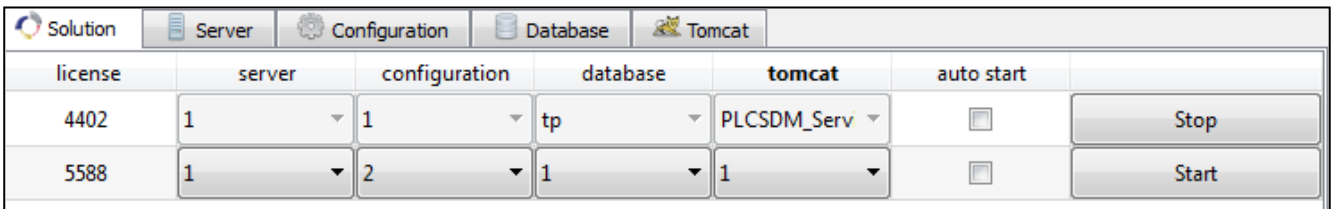
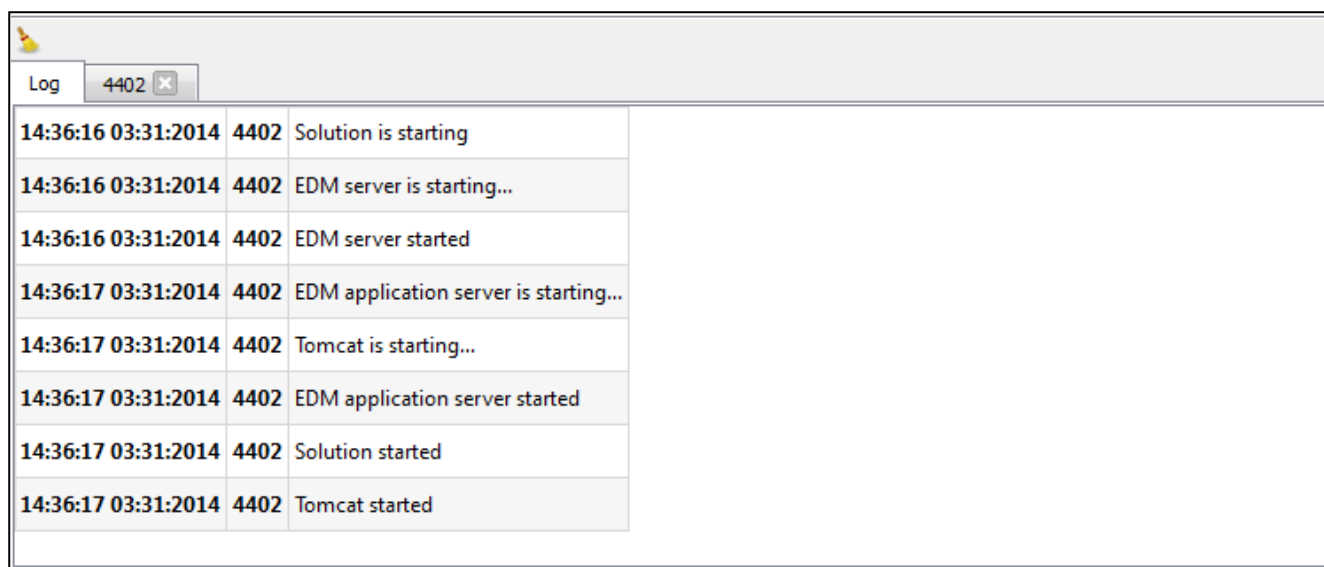


Figure 31: Stopping the solution

5 The Log Windows

The log windows shows the events from the *EDMsixService* and the *EDMsixServer*. Each time a solution is started a new tab will be created with the name of the solution license, if the tab has already not been created.



The screenshot shows a log window titled "Log" with a sub-tab "4402". The log entries are as follows:

14:36:16	03:31:2014	4402	Solution is starting
14:36:16	03:31:2014	4402	EDM server is starting...
14:36:16	03:31:2014	4402	EDM server started
14:36:17	03:31:2014	4402	EDM application server is starting...
14:36:17	03:31:2014	4402	Tomcat is starting...
14:36:17	03:31:2014	4402	EDM application server started
14:36:17	03:31:2014	4402	Solution started
14:36:17	03:31:2014	4402	Tomcat started

Figure 32: Log windows

EDMsixServerConsole log

The “Log” tab displays the *EDMsixService* events logs from all solutions in chronological order. The three columns show the time of the log, the license for the solution and a description for the event.

Solution logs

Each solution will have its own log tab. The tab contains the *EDMsixServer* startup command and *EDMsixServer* standard output.

NOTE:

It is possible to increase the *EDMsixServer* log by providing the “-t” as an additional argument in the runtime configuration.

Cleaning the log tabs

To clean the log tabs click on the broom icon located at the top right hand side of the log tabs.

6 Hiding or exiting the *EDMsixServerConsole*

The *EDMsixServerConsole* can be hidden to the system tray with by clicking on the dialog box close button or by choosing the “Hide” menu item in the “File” menu, see Figure 33.

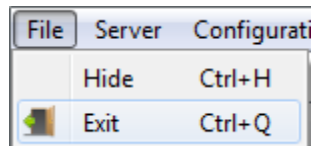


Figure 33: Minimizing the application

The minimised application is shown in the system tray as an icon. Either double click on the icon or select “Restore” in the tray icon context menu to show the *EDMsixServerConsole* window, see Figure 34.

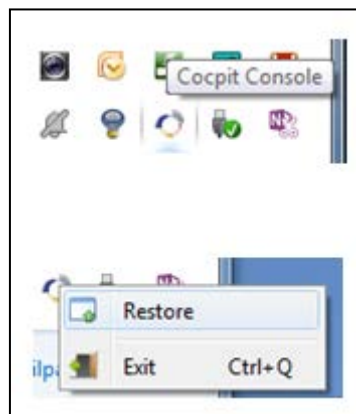


Figure 34: Opening the *EDMsixServerConsole* from the system tray.